

# AMITE RIVER AND TRIBUTARIES – COMITE RIVER DIVERSION PROJECT

CRD City of Central Community Meeting

March 29, 2021

Bobby Duplantier, USACE  
Christina Brignac P.E., DOTD

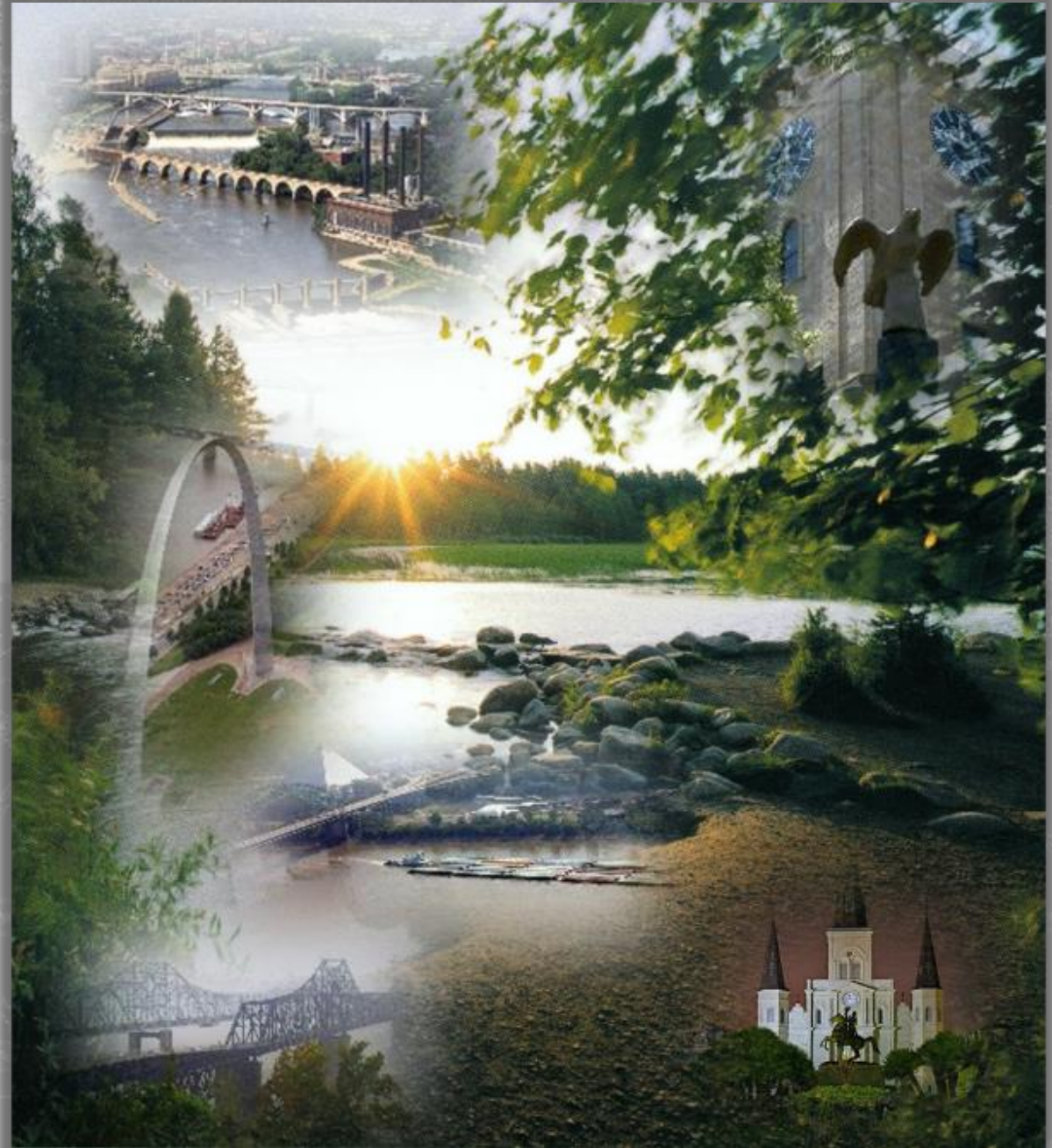
March 29, 2021



US Army Corps  
of Engineers®



**BUILDING STRONG®**





# COMITE RIVER DIVERSION OVERVIEW



## Purpose

Provide flood damage reduction for the residents in the lower Comite River Basin.  
Divert flood waters from the Comite River to the Mississippi River

## Authorized Project Elements:

### USACE Construction

- Lilly Bayou control structure. (Completed in 2011)
- 12 mile diversion channel from the Comite River to the Mississippi River
- 2 Vehicular Bridges (Hwy 61 and McHugh Rd)
- 1 Rail Road Bridge (KCS)
- Diversion structure at the Comite River
- 3 Rock Chutes
- 4 Low Flow Pumping Stations (< 1.5 cfs) at each drop structure
- Clearing and snagging of Bayou Baton Rouge, White Bayou and Cypress Bayou

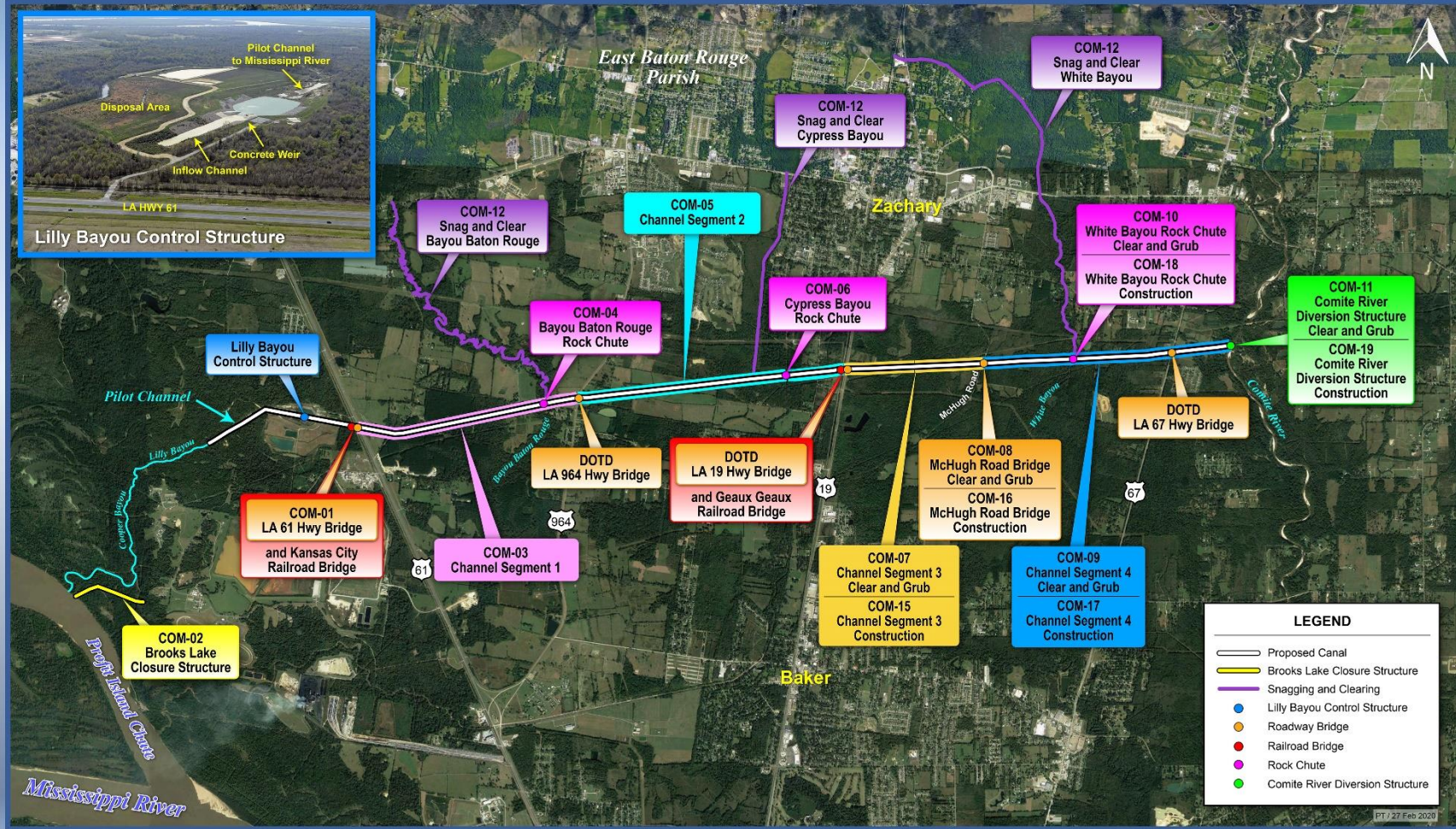
### DOTD Construction

- 3 Vehicular Bridges (Hwy 964, Hwy 19, Hwy 67)
- 1 Rail Road Bridge (Geaux Geaux)





# Comite River Diversion Project



**BUILDING STRONG<sup>®</sup>**  
and Taking Care of People!



# COMITE RIVER DIVERSION USACE RECENT PROGRESS



- Contracts 7-11 clearing and grubbing of 5 reaches (450 Acres) construction completed on 20 July 2020
- Hwy 61 construction contract awarded on 28 MAY20
  - Stockpile area and channel alignment from Hwy 61 to existing Lily Bayou Control Structure cleared, bypass road drainage ditches are complete
  - Construction on railroad shoo fly is complete
  - Shifting rail traffic to shoo fly occurred on 7 December 20
  - Construction completed on Hwy 61 bypass road tie in
  - Shifted vehicular traffic to bypass on 27 December
  - Clearing and Grubbing the of the Channel Segment is complete and excavation will begin in April 21
  - Test piles for both bridges are completed and construction of Hwy 61 piles are under construction
- McHugh Rd Bridge
  - Two lane vehicular bridge supported by 66 inch drilled concrete shafts
  - Portions of the diversion channel on each side of the bridge



**BUILDING STRONG®**  
*and Taking Care of People!*



# COMITE RIVER DIVERSION USACE RECENT PROGRESS



- 2 construction contracts, valued at over \$50M are scheduled for award in Q2 FY21
  - Channel Segment 4 (award in April)
  - White Bayou Rock Chute (award in April)
  
- Channel Segment 1 construction contract scheduled for advertisement in Q2 FY21
  
- 3 Construction contracts scheduled for advertisement in Q3 FY21
  - Channel Segment 2A
  - Cypress Bayou
  - Bayou Baton Rouge
  
- 95% design complete of all remaining features
  
- Acquired 50% of mitigation requirements for the entire project





# COMITE RIVER DIVERSION CONTRACTS 7-11 CLEARING AND GRUBBING



**BUILDING STRONG<sup>®</sup>**  
*and Taking Care of People!*



# COMITERIVER DIVERSION HWY 61 PROGRESS



Hwy 61 and KCS Bridges Construction  
Lilly Bayou Control Structure

Shaft Construction



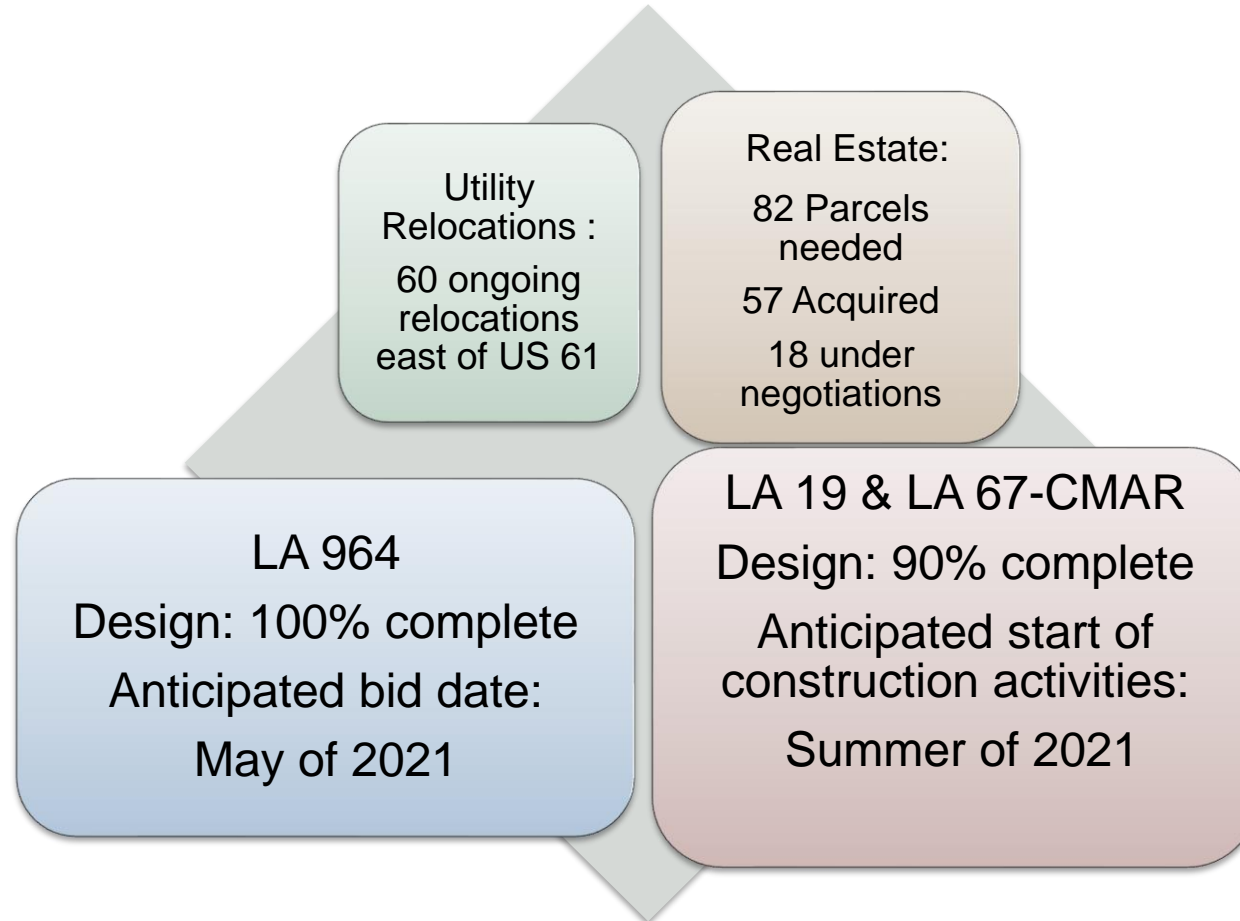
**BUILDING STRONG<sup>®</sup>**  
*and Taking Care of People!*



# DOTD PROJECT TASKS 2020-2021



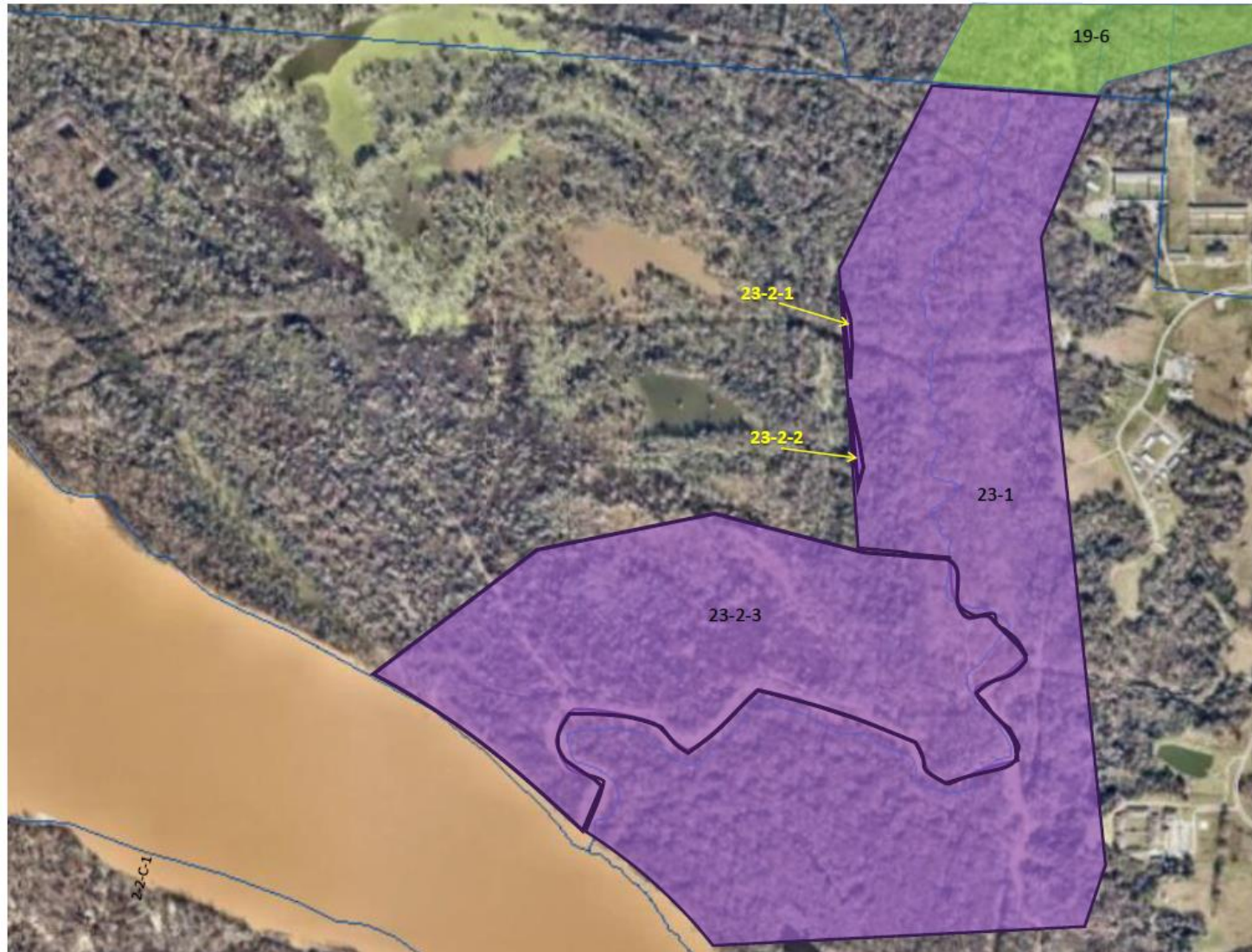
## Ongoing DOTD tasks







# REAL ESTATE ACQUISITIONS TO DATE-BROOKS LAKE ON-HOLD FOR DESIGN



Status Key

- Public Right of Way
- Waiting for Appraisal Approval
- Negotiating
- Closing
- Expropriation Suit Pending
- Acquired
- Design change or other delay



**BUILDING STRONG®**  
*and Taking Care of People!*



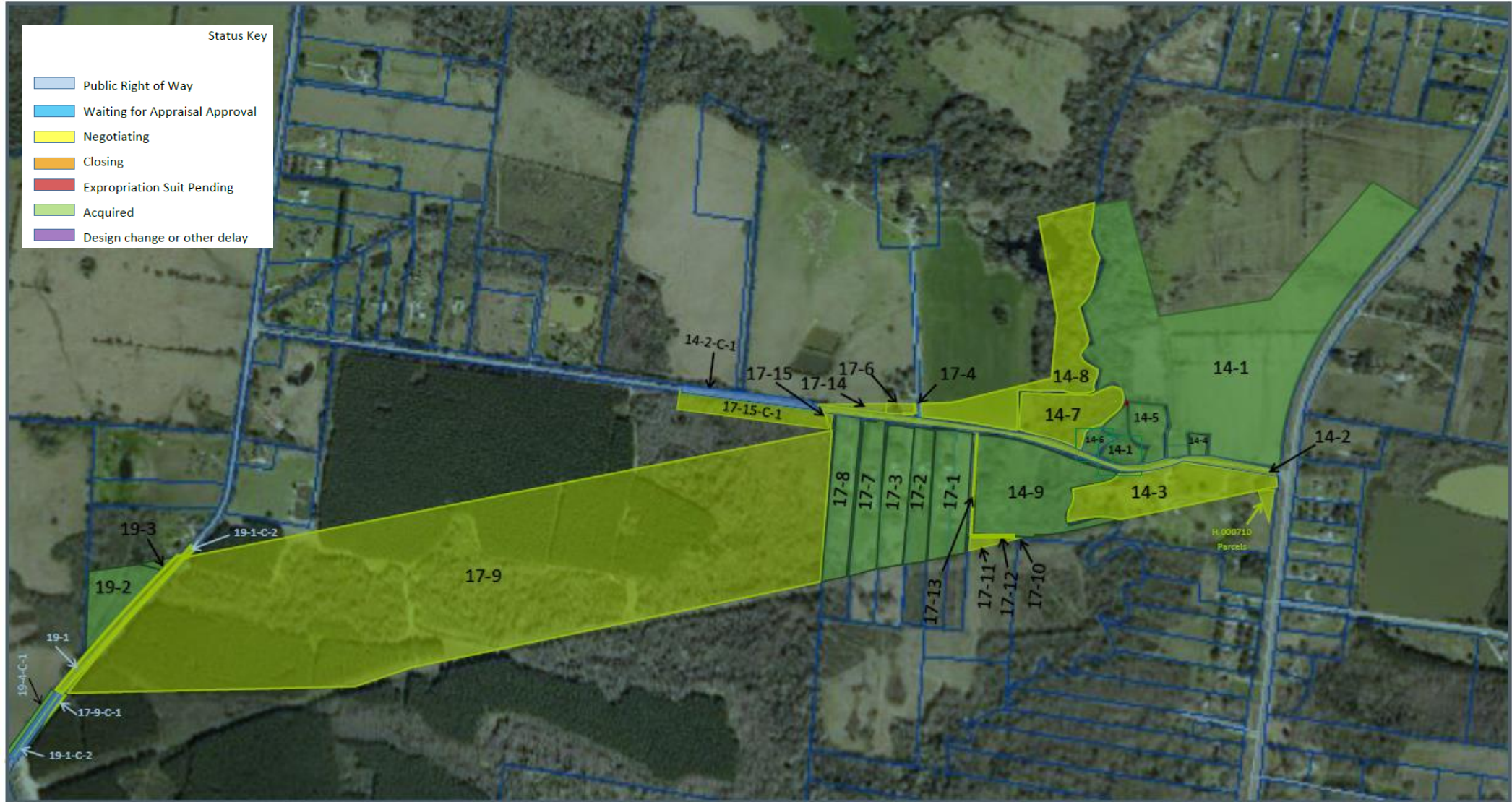
# REAL ESTATE ACQUISITIONS TO DATE-US 61



**BUILDING STRONG<sup>®</sup>**  
*and Taking Care of People!*



# REAL ESTATE ACQUISITIONS TO DATE- CHANNEL SEGMENT 1 & BAYOU BATON ROUGE



**BUILDING STRONG®**  
*and Taking Care of People!*



# REAL ESTATE ACQUISITIONS TO DATE- LA 964 & CHANNEL SEGMENT 2



Status Key

-  Public Right of Way
-  Waiting for Appraisal Approval
-  Negotiating
-  Closing
-  Expropriation Suit Pending
-  Acquired
-  Design change or other delay



**BUILDING STRONG<sup>®</sup>**  
*and Taking Care of People!*



# REAL ESTATE ACQUISITIONS TO DATE-LA 19 & CHANNEL SEGMENT 3 & MCHUGH RD.



**BUILDING STRONG®**  
*and Taking Care of People!*



# REAL ESTATE ACQUISITIONS TO DATE- CHANNEL SEGMENT 4 & LA 67



**BUILDING STRONG®**  
*and Taking Care of People!*



# COMITE RIVER DIVERSION SCHEDULE



CONTRACT ID	PROECT FEATURE	Contract Advertisement	Construction Complete
COMITE-01	Hwy 61 and KCS RR Bridges	Complete	2 <sup>nd</sup> Qtr 2022
COMITE-02	Brooks Lake Closure	4 <sup>th</sup> Qtr 2021	4 <sup>th</sup> Qtr 2022
COMITE-03	Channel Segment 1	2 <sup>nd</sup> Qtr 2021	2 <sup>nd</sup> Qtr 2022
COMITE-04	Bayou Baton Rouge Rock Chute	3 <sup>rd</sup> Qtr 2021	3 <sup>rd</sup> Qtr 2022
COMITE-05	Channel Segment 2A	3 <sup>rd</sup> Qtr 2021	3 <sup>rd</sup> Qtr 2022
COMITE-06	Cypress Bayou Rock Chute	3 <sup>rd</sup> Qtr 2021	4 <sup>th</sup> Qtr 2022
COMITE-07	Phase 1 Channel Segment 3	Complete	Complete
COMITE-08	Phase 1 McHugh Rd	Complete	Complete
COMITE-09	Phase 1 Channel Segment 4	Complete	Complete
COMITE-10	Phase 1 White Bayou Rock Chute	Complete	Complete
COMITE-11	Phase 1 Diversion Structure	Complete	Complete
COMITE-12	Clearing and Snagging of Three Bayous	4 <sup>th</sup> Qtr 2021	4 <sup>th</sup> Qtr 2022
COMITE-13	Phase 1 Lilly Bayou Repair	Complete	Complete
COMITE-15	Phase 2 Channel Segment 3	3 <sup>rd</sup> Qtr 2021	4 <sup>th</sup> Qtr 2022
COMITE-16	Phase 2 McHugh Rd Bridge	Complete	2 <sup>nd</sup> Qtr 2022
COMITE-17	Phase 2 Channel Segment 4	Complete	1 <sup>st</sup> Qtr 2022
COMITE-18	Phase 2 White Bayou Rock Chute	Complete	2 <sup>nd</sup> Qtr 2022
COMITE-19	Phase 2 Diversion Structre	4 <sup>th</sup> Qtr 2021	4 <sup>th</sup> Qtr 2022
COMITE-20	Channel Segment 2B	3 <sup>rd</sup> Qtr 2021	4 <sup>th</sup> Qtr 2022



**BUILDING STRONG<sup>®</sup>**  
*and Taking Care of People!*



# QUESTIONS ??



For additional information please contact:

USACE:

Bobby Duplantier

[Bobby.Duplantier@usace.army.mil](mailto:Bobby.Duplantier@usace.army.mil)

DOTD:

Christina Brignac, P.E.

[Christina.Brignac@la.gov](mailto:Christina.Brignac@la.gov)



**BUILDING STRONG<sup>®</sup>**  
*and Taking Care of People!*

